



Lawrence Berkeley National Lab

Berkeley Lab Operations Update

Community Advisory Group

September 12, 2022

Michael Brandt

Deputy Lab Director of Operations
and Chief Operating Officer

Alameda County Covid-19 Current Risk = LOW

SAFETY PROTOCOLS AT-A-GLANCE BY COVID-19 COMMUNITY LEVELS



updated August 25, 2022



For links and details, scan this QR code or
go to [go to go.lbl.gov/COVID-protocols](https://go.lbl.gov/COVID-protocols).

	LOW	MEDIUM <small>*subject to change based on local public health requirements</small>	HIGH <small>*subject to change based on local public health requirements</small>
Face Coverings - requirement based on CDC Community Level in the county where you work or travel (home telework locations excepted).	Required in Health Services (Bldg 26) and on Lab Shuttles. Otherwise, voluntary.	Required in Health Services (Bldg 26) and on Lab Shuttles. Otherwise, voluntary.	Required indoors and on Lab Shuttles.
Physical Distancing	None. No longer required for Protocol B.	No longer required for Protocol B. All are encouraged to distance and avoid crowds.	No longer required for Protocol B. All are encouraged to distance and avoid crowds.
Wear a respirator	No longer required for Protocol B within 6 feet of others indoors. Available to all.	No longer required for Protocol B within 6 feet of others indoors. Available to all.	No longer required for Protocol B within 6 feet of others indoors. Available to all.
Share Government Vehicles with Others	Allowed for all, face coverings not req'd. Protocol B no longer restricted.	Allowed for all, face coverings not req'd. Protocol B no longer restricted.	Allowed for all, face coverings required. Protocol B no longer restricted.
Handwashing and Surface Cleaning	Required	Required	Required
Weekly Symptom Screener/ Daily Self-Monitoring	Required	Required	Required
LBL 0012 COVID-19 Training	Required	Required	Required
Report Cases to Health Services	Required	Required	Required
Exposure to Someone who has COVID-19 or Tested Positive - follow CDC guidelines for exposure	Wear a mask when around others indoors for 10 full days and get tested after Day 5. Quarantine is not required.	Wear a mask when around others indoors for 10 full days and get tested after Day 5. Quarantine is not required.	Wear a mask when around others indoors for 10 full days and get tested after Day 5. Quarantine is not required.
COVID-19 Testing Program	Available for Protocol A and Protocol B. No longer required for Protocol B.	Available for Protocol A and Protocol B. No longer required for Protocol B.	Available for Protocol A and Protocol B. No longer required for Protocol B.
Visitor Certification of Vaccination Form	Not Required	No longer required	No longer required
Non-business visitors allowed	Yes	No	No
Gatherings, Meetings, Events, etc. (no restrictions on size)	Follow Meetings Protocols and arrange through Conferences Services, if using. Notification on a form no longer required.	Follow Meetings Protocols and arrange through Conferences Services, if using. Notification on a form no longer required.	Follow Low/Medium requirements. Consult with EHS no longer required.
Travel Requirements	Follow Travel Protocols. WPC and COO approval no longer required for Protocol B.	Follow Travel Protocols. WPC and COO approval no longer required for Protocol B.	Follow Travel Protocols. WPC and COO approval no longer required for Protocol B.
Vaccine / Booster #1 Mandated for Employees	Required	Required	Required

UC Berkeley Centennial Bridge Update

- UC project
(Lab is coordinating with UC)
- Design complete
- Construction work will begin in late October
- Estimated completion time: 2 years



Fire Mitigation, Protection, & Planning

Vegetation Management: ~\$250k spent FY21

- Electrical sub-station collaboration with PG&E
- Clearing and removal:
 - North West Canyon
 - Blackberry Canyon Lot
 - B60-64 Hillside

Plans & Assessments:

- Complete Fire Perimeter Exposure Assessment in 2021
- LBNL Awarded \$2.9M Cal Fire Grant (July, 2022)
- Continually updated planning documents:
 - Vegetation Management Guide
 - Wildland Fire Management Plan



North West Canyon Clearing



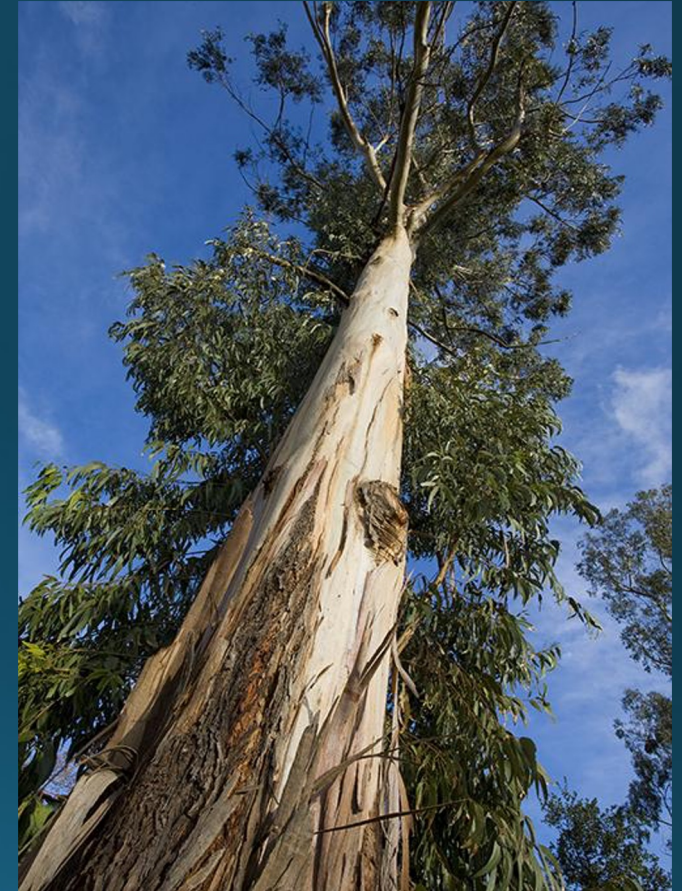
PG&E Collaboration (before)



PG&E Collaboration (after)

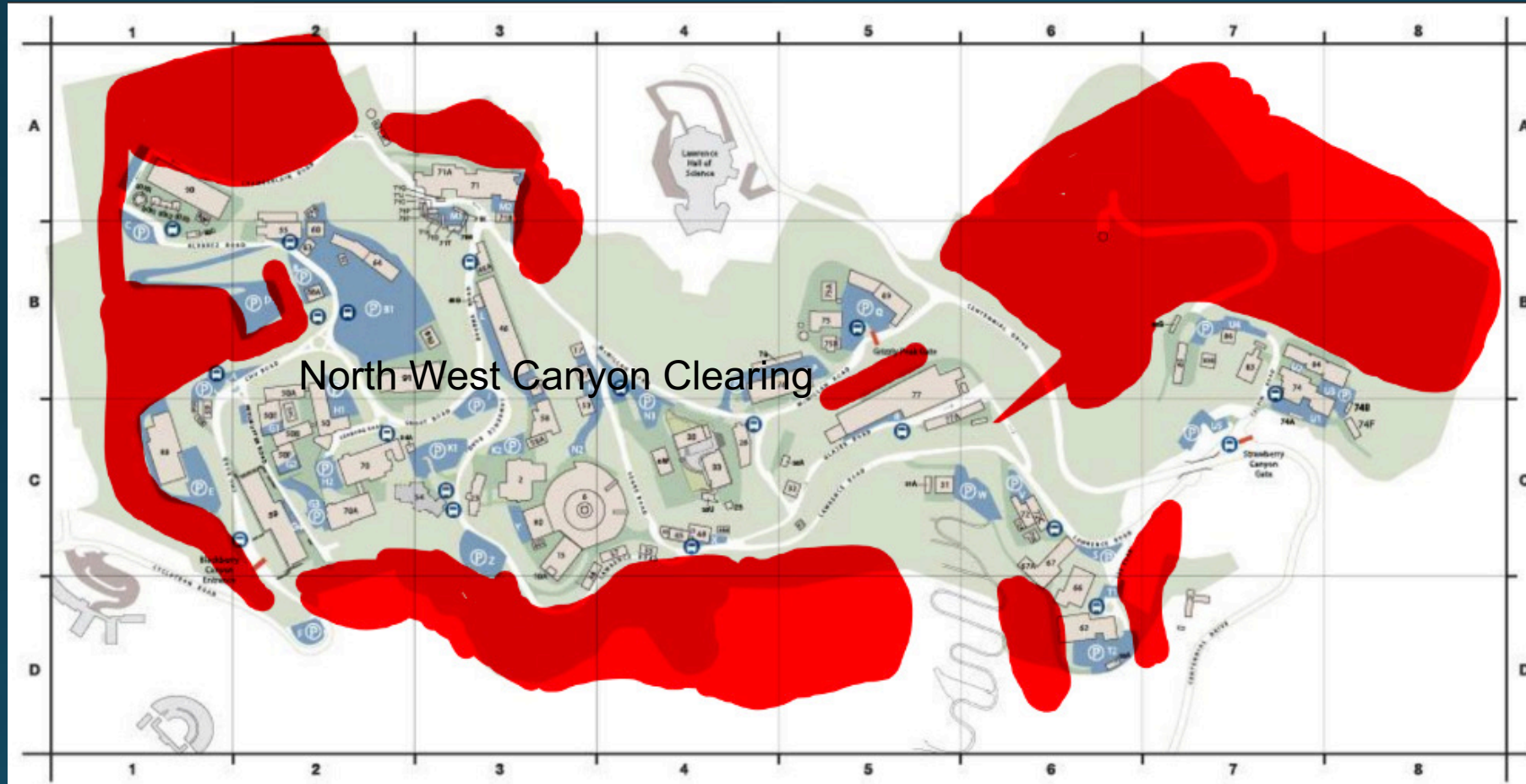
\$2.9 M State Grant to Remove & Replace ~700 Trees

- Received grant of \$2.9 million from Cal Fire - state agency responsible for wildland protection
- Includes about 700 trees, mostly eucalyptus trees
- Targeting areas that are near residential areas and community evacuation routes
- Felled trees will be chipped for ground cover
- Tree replacement at the Lab perimeter and interior areas to the north, west, and east
- Will replant the areas with native species of vegetation



The Lab will continue to innovate to protect our neighbors from wildfire.

Targeted Tree Removal & Replacement Areas



Goat Mowing

BEFORE



DURING



AFTER



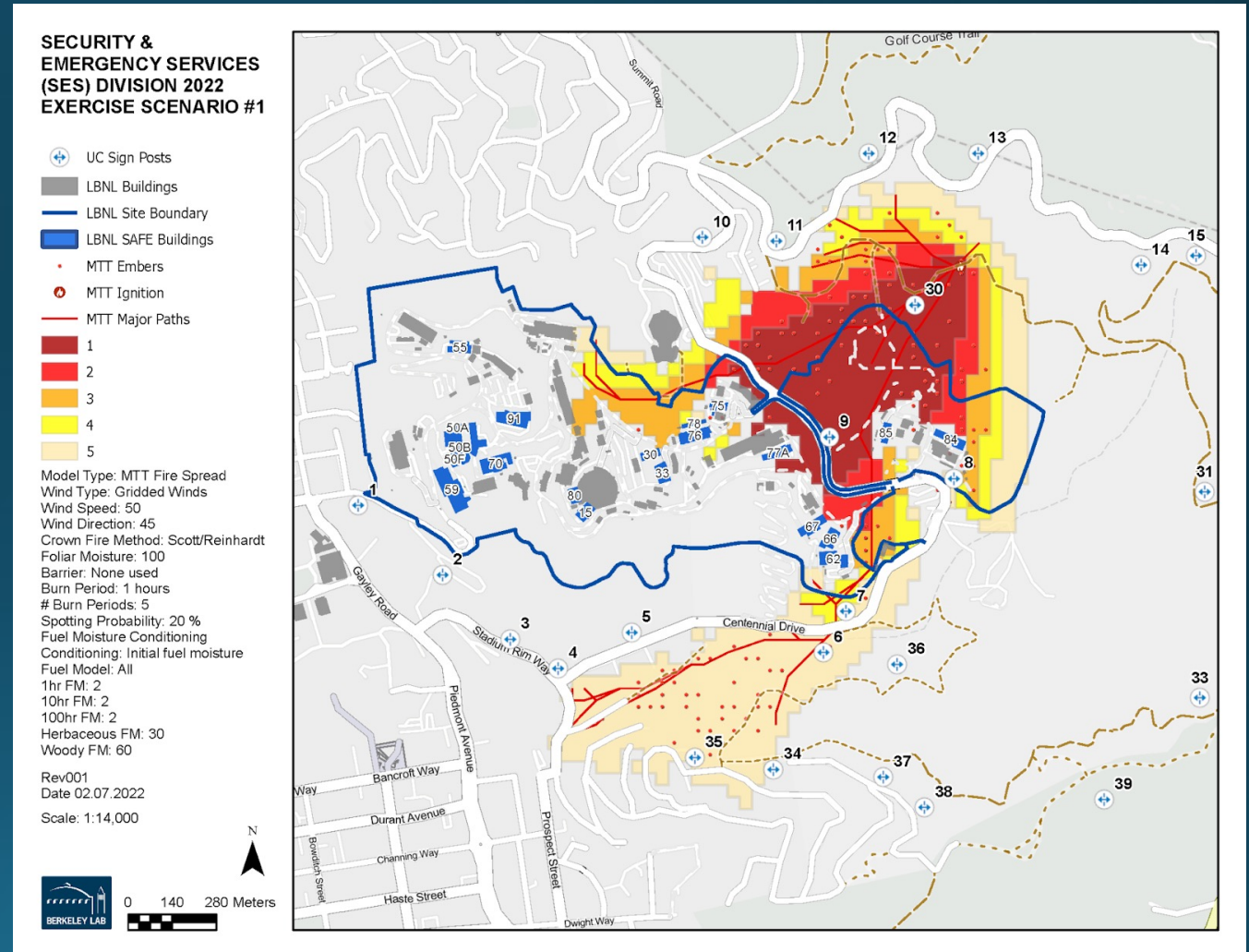
Annual Full-Scale Exercise

- Last year: Active Threat (July 30, 2021)
 - Test Emergency Operations System
 - Increase integration with response partners
- This year: Wildland Fire (September 16, 2022)
 - Exercise Lab's integration with Berkeley Fire & ACFD
 - Pre-planning conducted with City of Berkeley Emergency Management and Berkeley Fire, UC, and Alameda County



2022 Exercise Format

- Red Flag Warning, fire detected from North East originating from Grizzly Peak
- Emergency responder initial response
 - Berkeley Fire
 - Alameda County Fire
 - UCPD
- Unified Command established with LBNL and first responders; Notifications to local community (simulated) and Lab personnel
- Follow-on table top exercises with City/community and response partners to improve existing plans



Community Feedback and Collaboration

Berkeley Hillside Fire Safety Group



Building community partnerships prepares us all.

You are invited...

*Berkeley Lab invites
CAG members
to tour the Lab!*

Join us on

*November 7,
3-5pm*

Detailed invitation to follow.



THANK YOU

QUESTIONS ??